

# Time's Up on Lab Culture!

8 reasons why the 'Gold Standard' for Legionella testing cannot protect you, your employees or your customer's from Legionnaires' Disease.



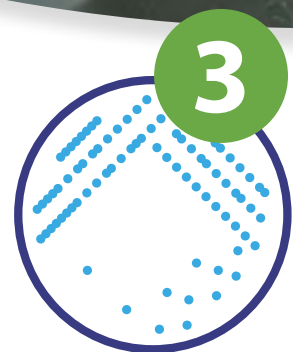
## 1 DAMAGE FROM TRANSPORT

Water samples can get damaged in the transportation process, killing the Legionella inside. This increases the risk of a false negative result.



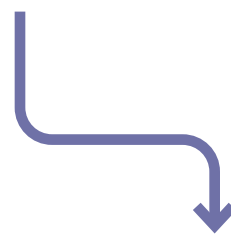
## 2 ACID AND HEAT TREATMENT

This process, used in the lab to purify the sample, can kill Legionella and increase the risk of a false negative result.



## 3 VIABLE BUT NON-CULTURABLE

Some dangerous Legionella bacteria cannot ever be detected by the culture method.



## 4 ARTIFICIAL ENVIRONMENT

In natural water systems, Legionella can grow easily inside amoeba. But this is not the case in the artificial environment of a lab plate, thus increasing the risk of a false negative result.



## 5 IN ITS MOST DANGEROUS PHASE (MOTILE PHASE), LEGIONELLA CAN DIRECTLY INFECT HUMAN LUNGS

However, motile Legionella cannot be easily replicated via the culture method, due to the absence of natural amoeba.



## LAB CULTURE TESTING CAN HAVE LOW RECOVERY RATES – THAT'S A FACT

And it makes risk management almost impossible!



## 6 THE LAB TEST IS TOO SLOW!

Legionella can double in a day and during the 7-10 day delay, businesses, employees and the public are exposed to risk.



## 8 INEFFICIENT INFORMATION AND AUDIT TRAIL

After 7-10 days, the written report must be delivered, read and interpreted, before action can be planned. This results in further delays and prolonged periods of exposure to risk. What staff really need is a clear, immediate result which allows immediate action!

FOR ONSITE, FAST & ACCURATE TESTING, VISIT [www.hydrosense-legionella.com](http://www.hydrosense-legionella.com)

# The World's Fastest Legionella Test